

INSTALLATION INSTRUCTIONS

VANAIR Vent model – “VP” (12vdc powered)

Caution! For general ventilating use only. Do not use to exhaust hazardous or explosive materials or vapors.
Caution! Do not allow insulation, ceiling finishing materials, roofing materials, or other debris to enter the fan area. Motor failures due to debris are not subject to warranty coverage.

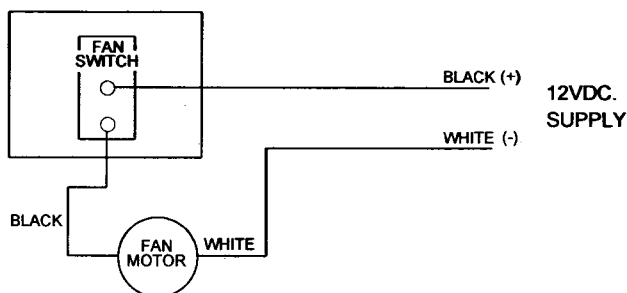
CAUTION! This fan unit has not been evaluated for suitability for installation over tub or shower.

CAUTION! This fan unit is not intended for direct installation over range cooking surfaces.

WARNING: Not suitable for use with solid state speed controls. **AVERTISSEMENT:** Ne Convient Pas A Des Regulateurs De Vitesse A Semi-Conducteurs

- 1) Locate ceiling joists, mark desired location between joists on ceiling and roof. Cut 6 1/4" round opening through ceiling and roof. The smaller diameter on the ceiling garnish may be used as a template.
- 2) Remove the (2) screws located on the roof cap and remove cap to expose the mounting holes.
- 3) Apply silicone sealant or equivalent to bottom of roof mounting flange. (Never use a latex type caulk). Orient the fan so that the lettering "FRONT" is towards the front of the vehicle. Mount vent to roof with screws of sufficient length through the mounting holes in the flange.
- 4) Locate lead wires and make electrical connections per local and/or applicable codes. For proper fan rotation, connect the loose black lead wire to the positive (+) supply. Connect the white lead wire to the negative (-) supply.
- 5) Place ceiling garnish into opening aligning slot in garnish or hole in extension if used, with the wire exit point on the fan, route wiring through. Drive #8 screws through mounting holes and tighten to ceiling, be careful not to over tighten and distort garnish.

WIRING DIAGRAM



Read and Save These Instructions!

Warning! To reduce the risk of fire, electric shock, or injury to persons, observe the following:

- (a) Use this unit only in the manner intended by the manufacturer. If you have questions, contact the manufacturer.
- (b) Before servicing or cleaning unit, switch power off at the service panel and lock service disconnecting means to prevent power from being switched on accidentally. When the service disconnecting means cannot be locked, securely fasten a prominent warning device, such as a tag, to the service panel.

Care and Cleaning

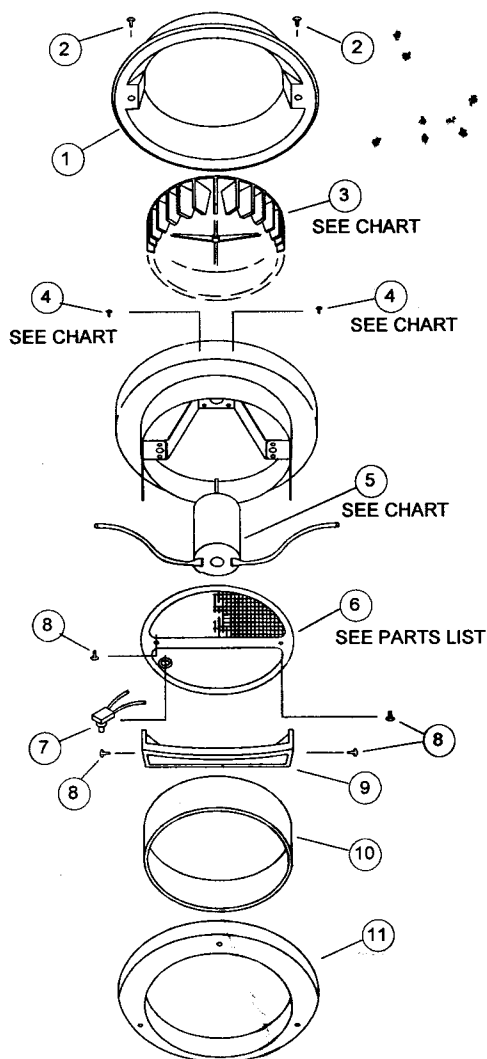
Fan Interior: After disconnecting power, remove the garnish trim, crank handle and screen frame to gain access to the motor and fan blade. Vacuum any accumulated dust and lint from the fan blade, housing interior, and motor. Wipe the fan blade with a moist cloth or sponge to remove any dirt buildup.

Inlet screen: Before replacing screen and garnish trim, clean with a solution of warm water and mild detergent applied with a soft cloth or sponge. Do not use gritty or abrasive cleaners.

VENTLINE By DEXTER
902 S. Division Street
Bristol, Indiana 46507

VC0226-00
Rev. N
ECN. 18898
05/07/15

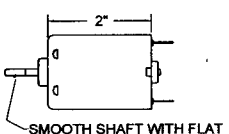
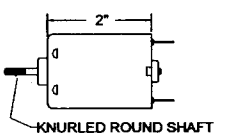
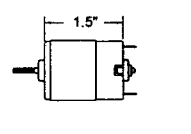
VANAIR VENT PARTS LIST
 Order parts by part no. NOT by item no.



ITEM	QTY.	PART NO.	DESCRIPTION
01	1	VA0502-02	CLEAR PLASTIC DOME
		VA0502-03	SMOKE PLASTIC DOME
02	2	C0119-00	#8 X 1/4 SHT. METAL SCREW *
03	1	SEE CHART	BLOWER WHEEL
04	2	SEE CHART	MACHINE SCREW *
05	1	SEE CHART	12VDC. MOTOR
06	1	VC0515-05	SCREEN FRAME
07	1	V0199-03	PUSHBUTTON SWITCH
08	4	VA0212-00	#6 X 7/16 C'SUNK SCREW *
09	1	VA0207-05	PLASTIC HANDLE
10	1	VA0228TAB	GARNISH EXTENSION RING **
11	1	VA0205-07	CEILING GARNISH

* PURCHASE LOCALLY
 ** SOLD SEPARATELY, CALL FACTORY FOR AVAILABILITY

MOTOR / FAN BLADE COMBINATIONS YOU MAY HAVE

 SMOOTH SHAFT WITH FLAT	 KNURLED ROUND SHAFT	
VA0164-00 MOTOR	VC0468-00 MOTOR	VD0218-00 MOTOR
VA0211-00 FAN BLADE	VC0467-00 FAN BLADE	VD0217-00 FAN BLADE
#4-40 MACHINE SCREW	#4-40 MACHINE SCREW	M2.6 MACHINE SCREW